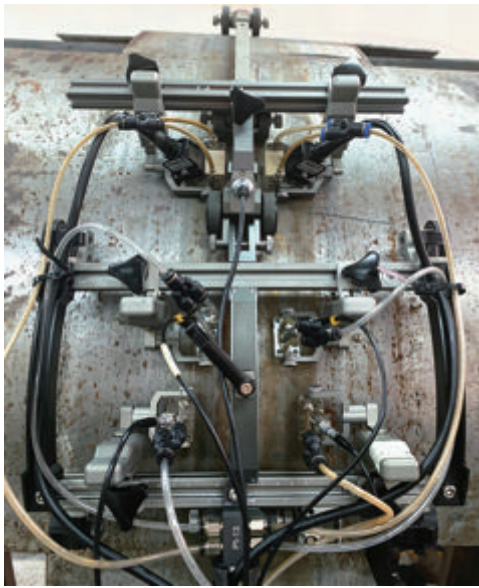


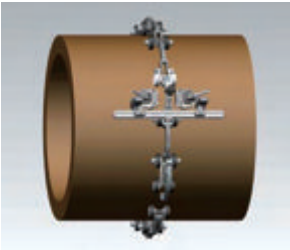
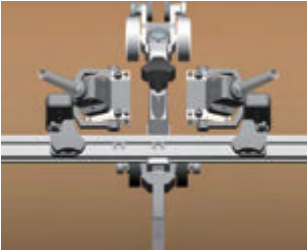

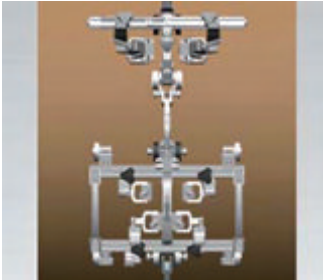

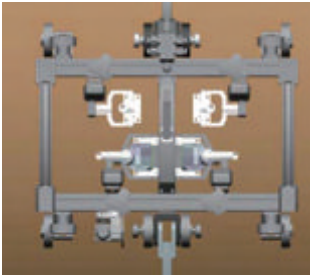
# CPS-02



## Superior Features

- CPS-02 is designed to work with SyncScan 2 to perform circumferential weld inspection on medium and large diameter pipes(OD 100-1000mm).
- Support up to six probes, achieving PAUT+TOFD and dual-side inspection for pipes with thicker wall.
- Three types of chain links, flexible buckle design, enabling the crawler have better coupling stability.
- High-strength aluminum alloy material, strong and lightweight.

## CPS-02 Series

CPS-02 (Phased Array)		
		Support up to 2 PA probes for PA testing on pipe with diameter large than 100mm.
CPS-02A (Phased Array +2-channel TOFD)		
		<ul style="list-style-type: none"> <li>•Standard configuration: Support up to 2 PA and 1-channel TOFD testing. Work with Crossbeam on pipe(OD<math>\geq</math>100mm). Work with Truss on pipe(OD<math>\geq</math>300mm).</li> <li>•Upgradeable to 2 PA and 2-channel TOFD testing on pipe(OD<math>\geq</math>300mm).</li> </ul>
CPS-02B (Phased Array +1-channel TOFD)		
		Support up to 2 PA probes and 1 pair of TOFD probes for PA and TOFD testing on pipe with diameter large than 300mm.

## On-site Application

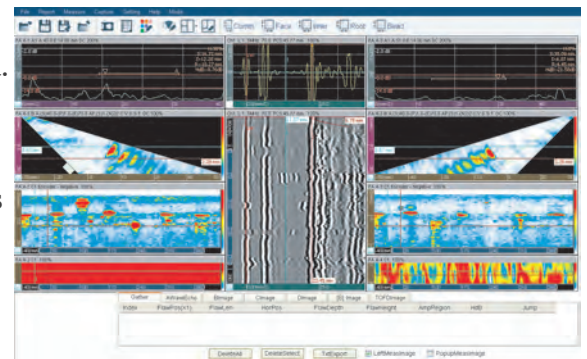
- With its flexible buckle design, just easily buckle up and unbuckle the links for different pipe diameters.



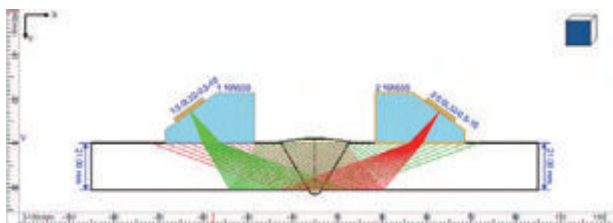
## Data Analysis Software

- SuporUp, can analyze and measure acquired PA and TOFD data.

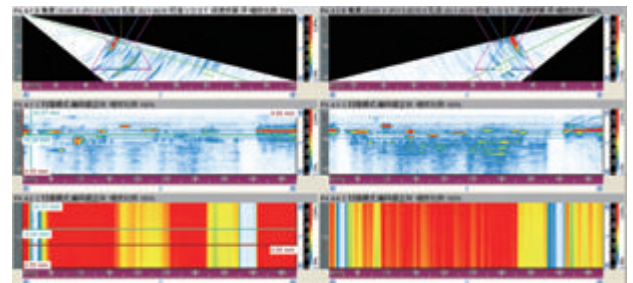
Rich management, measurement and analysis functions in the software are available for data playback of A, B, C, D scans and TOFD data, digital gain adjustment, imaging mode switch and multi-gate measurement, etc.



Based on the measured results, a test report is generated automatically by one-press.



- Beam Coverage Simulation



- Coupling Monitoring

## Technical Parameters

### ● Crawler CPS-01



Item	Description
Weight	10.5kg
Dimension(W×H×D)	30×10×445mm
Probe Holding Capacity (Standard configuration)	PA Probe(2 pcs)
Scan Method	Manual/ Automatic(with AUS-01)
Encoder Connector Type	4-core
Encoder Precision	0.12mm/steps
Encoder IP Code	IP68
Suitable Tested Work Piece	Pipe(Outside Diameter)
	1000~1300mm
Working Condition (Temperature)	-20℃ ~+45℃

### ● Crawler CPS-02

Item	Description		
Series	CPS-02	CPS-02A	CPS-02B
Weight	8kg	10.5kg	9.5kg
Dimension(W×H×D)	30×10×345mm	30×13.5×375mm	30×13.5×350mm
Probe Holding Capacity(Standard configuration)	PA Probe(2 pcs)	PA Probe(2 pcs) TOFD Probe(1 pair)	PA Probe(2 pcs) TOFD Probe(1 pair)
Suitable Tested Work Piece	Pipe(Outside Diameter)		
	100~1000mm	100~1000mm	300~1000mm
Scan Method	Manual		
Encoder Connector Type	4-core		
Encoder Precision	0.12mm/steps		
Encoder IP Code	IP68		
Working Condition (Temperature)	-20℃ ~+45℃		

**Note:** SIUI can provide Crawler CPS-01/02 with different connectors compatible with PA/TOFD equipments from other manufacturers.

## Technical Parameters

Optional Accessories		
Manual Irrigation Device	IH-05 (Capacity: 5L)	
Auto Irrigation Device	IA-02 (Capacity: 18L)	

# SIUI

Shantou Institute of Ultrasonic Instruments Co., Ltd.

Add: #77, Jinsha Road, Shantou 515041, Guangdong, China

Tel: +86-754-88250150 Fax: +86-754-88251499

E-mail: [siui@siui.com](mailto:siui@siui.com) Website: <http://www.siui.com>

Specifications and appearance are subject to change without prior notice.  
DCY2.781.EN.CPS-0102.CY/6A01